



AROUND CAMPUS

CRI

2/1: Living Green Month Begins

2/2: Healthy Eating 5:30-6:30 pm
Soccer Officials Clinic I
9 pm seminar room



2/3: Lose it, Love it, Live it
5:30-7:00 pm
Soccer and Basketball
State Qualifier entries due

2/4: Cooking Seminar 5:30-7:00 pm
Club sports Council 6:00 pm



2/5: Lead Climbing Clinic

2/6: NIRSA Day 5K Race, 6 pm

Apply to Be an FYE Peer Leader &
Eagle to Eagle Peer Mentor

- Get Involved
- Earn Service Hours
- Be a Positive Role-Model
- Build Your Resume



Applications are due February 6, 2009



For More Information and applications visit:
[http://academics.georgiasouthern.edu/fye/
student_leaders.htm](http://academics.georgiasouthern.edu/fye/student_leaders.htm)

Fresh Start - Friday Night Hall Programs

Brannen

**"Keeping Up with Academics,
Keeping up with Current Events"
Snacks, Current Events, Video Games
Brannen Hall Lobby 7:00 pm**

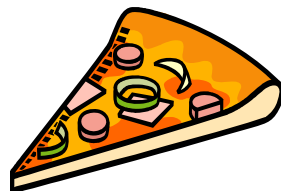
Kennedy Hall

**"Pajama Slumber Party"
Movies and Fun Activities
Kennedy MPR 7:30 pm**



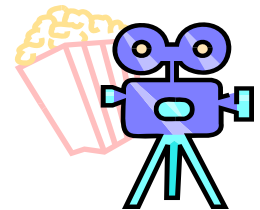
Eagle Village

**"Are You Smarter than an RA?"
Pizza and Games
EV Clubhouse 6-8:00 pm**



Watson Hall

**"Orange County"
Movie and Snacks 3:30 pm
Watson Commons Lobby**



Southern Courtyard

**"Life Skills Workshop"
Southern Courtyard Clubhouse 5:30 pm**

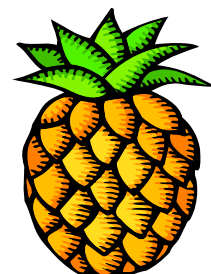
Southern Pines

**"Monopoly Madness"
Southern Pines Clubhouse 6:00-7:30**



University Villas

**"Pineapple Express"
Movies and Pizza
UV House 7 pm**



**Georgia Southern University Housing
Returning Student Sign-Up 2009-2010
Your Blue Print to Success**

- We are currently accepting applications for fall 2009-2010 for returning students on our website at www.gsohousing.com/signup2009/ If you would like the opportunity to return to campus for the 2009-2010 year, **you must complete a returning student application by January 31, 2009** in order to participate in the room selection process.
- The actual room selection process will occur between February 11, 2009 and February 15, 2009. During this time, you will be able to select your room on-line, as well as your roommate/roommates. Fall 2009 has many options available to upper class students which include:
 - Centennial Place** (our newest residence hall)-2 and 4-bedroom apartments
 - Southern Courtyard** -2 and 4-bedroom apartments
 - University Villas**-2 and 4-bedroom flat and town house apartments
 - Watson Commons**-traditional room with roommate
 - Kennedy, Sanford and Brannen Halls**-there will be a limited number of spaces.



For more information, you may contact University Housing at housing@georgiasouthern.edu or (912) 478-5406!

**Need Help with Chemistry?
Having problems with Math or English?**

Housing has a peer tutor staff available for your academic needs.



- 3 peer tutors in the Eagle Village Clubhouse
- 3 peer tutors in the Southern Pines classroom.

Please be sure to keep an eye out for the specific schedules around the Eagle Village and Southern Pines clubhouses.

National Teach In Day

Join us for a panel discussion over Global Warming Issues.

City Councilman Will Britt will be on the panel.

**The event is February 4
at 7 pm in Biology
Room 1119.**



G
r
e
e
n
S
c
e
n
e

DEPT. OF UNIVERSITY HOUSING
SUSTAINABILITY & RECYCLING COMMITTEE

HELPFUL TIPS

Prevent heat loss - report drafts in your room.

If the "heat" is on, please close the windows.

SAVE ENERGY

by turning out the lights when not in use.

Gone for a **winter** weekend?
Turn down the thermostat.

RECYCLE using the bins in Common Areas.

Keep your eye on the **Green Scene** for future tips on how **U** can keep our campus **GREEN**.

You may e-mail us with your ideas and/or comments at pwaters@georgiasouthern.edu



Have a GREEN Day!!!

U can help

Looking for Spring Break Travel Plans?

The Office of Student Leadership and Civic Engagement is offering Alternative Spring Break Trips!



Travel to the Bahamas or to Honduras for only \$500 each (meals are not included in the Honduras Trip).

The Bahamas Trip will be going to Freeport, Bahamas via a cruise. You will be working with Karazim Ministries and will be helping local residents by doing some home repairs, food and clothing hand outs, and many other things.

The Honduras trip will be going to San Pedro Sula and part of the work will be with an orphanage down there.



Contact Diana Hensley at dhensley@georgiasouthern.edu