



Georgia Southern Football

Watch Georgia Southern vs Appalachian State on the big screen Saturday, October 20th at the Russell Union Theatre at 3:30pm.

FREE pizza, snacks, drinks, and Georgia Southern giveaways! Bring a couple bucks to donate for the new, "Student Union Fund."

Show your school spirit and come in Blue and White!!!!



Career Corner

The Eagle Expo Career Fair has arrived!

Please make plans to attend the fair on Wednesday, October 24, 9am-2pm at the RAC.

Companies will be present to answer questions about careers, accept resumes for job openings, and provide information about their companies. All students are encouraged to attend; however, we ask that you please dress appropriately for the event. Students seeking employment should dress in professional attire. Students seeking basic career information can dress business casual meaning khaki or dress pants and a nice shirt.



For a complete listing of companies attending, please visit our website at: <http://students.georgiasouthern.edu/career>. For more information, contact Career Services at 681-5197.

HALL-O-Ween!

"A Blue and White HALL-O-Ween" is coming to Eagle Village on October 29th from 5:30 - 8 p.m. This event is for children throughout the community, who will be coming to EV for treats and good fun! Keep an eye out for the event!



For more information, email Erik Sorensen at: esorens1-gw@georgiasouthern.edu

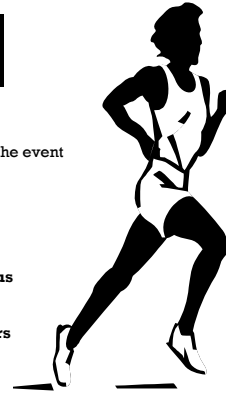
5K Fun Run/Walk For a Cause

Date: Saturday 11/03/2007
Runners Check-In 9:30am
Pre-register by: 10/22/07

Entry fees:

- \$10 for runners registered at the event
- \$7 for Pre-registered runners
- \$5 for senior citizen runners

The run will be around campus starting at the RAC. We will have various water stops around campus and volunteers pointing out the course.



Proceeds will go to the Statesboro Food Bank

PRIZES

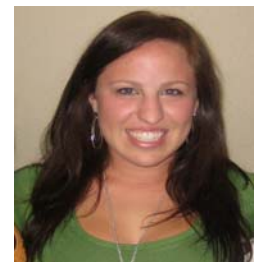
First ten runners will receive a t-shirt
1st place: t-shirt and certificate
2nd place: t-shirt and certificate
3rd place: t-shirt and certificate

For more information or to register, please stop by the Office of Student Leadership and Civic Engagement (RU 2022) or email Pamela Rivera at privera2@georgiasouthern.edu or Diana Hensley at dhensley@georgiasouthern.edu

Sponsored by:
The Office of Student Leadership and Civic Engagement

President's Corner

I realized as I revisited the Presidential Corner of last week that many of you may need more background about the Residence Hall Association (RHA). RHA is a diverse group of leaders designed to heighten your experience living on campus here at Georgia Southern University. Myself, the Executive Board, Hall Councils, Residence Hall Judicial Board, National Residence Hall Honorary, and the United Council of Resident Advisors are all here to work for you. I found a great quote to represent the leadership that comes along with being a part of RHA stated by Benjamin Disraeli: "I must follow the people. Am I not their leader?" The important thing to remember when thinking about RHA is that WE are here for YOU. I hope that you all use us as a resource when creating an exciting community. Get to know your Hall Council, look out for programs put on within your community, and let your voices be heard.



If any of you have ideas for RHA to help improve your community, email me at rha_deb@yahoo.com.

Your RHA President, Deborah Swofford

HOMECOMING 2007: MYSTERY OF THE CENTURY



Date	Event
Saturday, October 20th	Mud Volleyball, by the RAC Pavillion 10AM - 6PM
Sunday, October 21st	Mentalist, Banachek at 8pm Russell Union Ballroom http://www.banachek.org
Monday, October 22nd	Framed, Russell Union Rotunda, 10AM to 2PM GSU Idol, Performing Arts Center at 7PM
Tuesday, October 23rd	Sculpt It For The Hungry, Russell Union Rotunda, 11AM - 3PM (Judging at 2PM) Slots For Sleuths, Russell Union Ballroom, 6PM - 10PM
Wednesday, October 24th	What's For Lunch?, Russell Union Rotunda, 11AM - 2PM Doo-Dah/Step Show, Hanner Fieldhouse, 7PM
Thursday, October 25th	Palm Readings by Catherine, Russell Union Rotunda, 11AM - 2PM Pep Rally, Crocs Next Step Tour and Court Announcement, Bandshell/Pavillion at 7:30PM http://www.nextstepcampustour.com
Friday, October 26th	Parade, 4PM - 5:30PM Homecoming Cookout, Sweetheart Circle, 5:30PM - 7PM Movie: Transformers, Russell Union Theater, 7PM Fireworks, J.I. Clements Baseball Stadium, 9PM Indoor Laser Tag, RAC Gym, 9:30PM - 1AM
Saturday, October 27th	Eagle Football vs. The Citadel, Paulson Stadium, 12PM Crowning of King and Queen, Paulson Stadium, Halftime
ONLINE KING & QUEEN ELECTIONS	Check WINGS and Homecoming Website: All Day OR Vote at one of the voting polls in the Russell Union or at Noontime events

Important Information about Your Housing Contract

Are you Graduating?
Student Teaching?
Studying Abroad? or just
taking a semester off?



Current on-campus
residents who will not be
living on campus for the
spring semester need to
notify the housing office by
November 1, 2007, that they will not be returning to
the residence halls. If so, you must complete the
following steps:

- (1) Complete the on-line cancellation form at
www.gsuhousing.com/cancel/. Does it matter when I
cancel? Yes!
⇒ if you cancel by **Nov. 1**, you are not assessed a housing
contract cancellation fee.
⇒ if you cancel between **Nov. 2-Dec. 1**, you will be
assessed a \$100.00 contract cancellation fee.
⇒ if you cancel from **December 2-the first day of the
spring semester**, you will be assessed a \$200.00
cancellation fee.
- (2) Provide official documents of your involvement in one of
the above programs to the Housing Office to complete your
cancellation.
- (3) Check out of your residence hall with your RA and return
your keys to avoid any improper check-out, cleaning, and/or
lost key charges.

Do you currently live in university housing and plan on
withdrawing from school mid-semester? If so, please
complete the cancellation form at [www.gsuhousing.com/
cancel/](http://www.gsuhousing.com/cancel/). Students who withdraw after October 15, 2007 (Fall
Semester) or March 15, 2008 (Spring Semester) are not
eligible for any housing refunds of their semester **housing
fees**.

Do you plan to move off campus but remain a student at
Georgia Southern for spring semester? Students who
wish to cancel their Housing Contract may do so under the
terms of the contract. Please refer to the contract at
www.gsuhousing.com/contracts/ for specific information.

*If you cancel your housing contract and want to continue as a
student at Georgia Southern, you will remain responsible for
all housing fees for the semester in which you cancel the
contract, as well as the housing fees for spring 2008.*

**Please refer to your housing contract for information
about canceling your housing contract.**